



DARUL

JANAY RESIDENCE



SOUTH C

4,3&2 Bedrooms

The Epicenter of Luxury and Convenience!



The Epicenter of Luxury and Convenience!



Property Features & Selling Price



4 Bedroom + DSQ

Area = 200sqm

Price = USD120,000



3 Bedroom + DSQ

Area = 150sqm

Price = USD100,000



2 Bedroom + DSQ

Area = 110sqm

Price = USD65,000



2 Bedroom + Without DSQ

Area = 100sqm

Price = USD60,000

The Epicenter of Luxury and Convenience!



Amenities



Grand Reception Lobby



High Speed Lifts



Gym



Masjid



Madrassa



Supermarket



Fire Fighting System



Internet and Cable Connectivity



Smart CCTV & Manned Security



Ample Parking

The Epicenter of Luxury and Convenience!



The Epicenter of Luxury and Convenience!



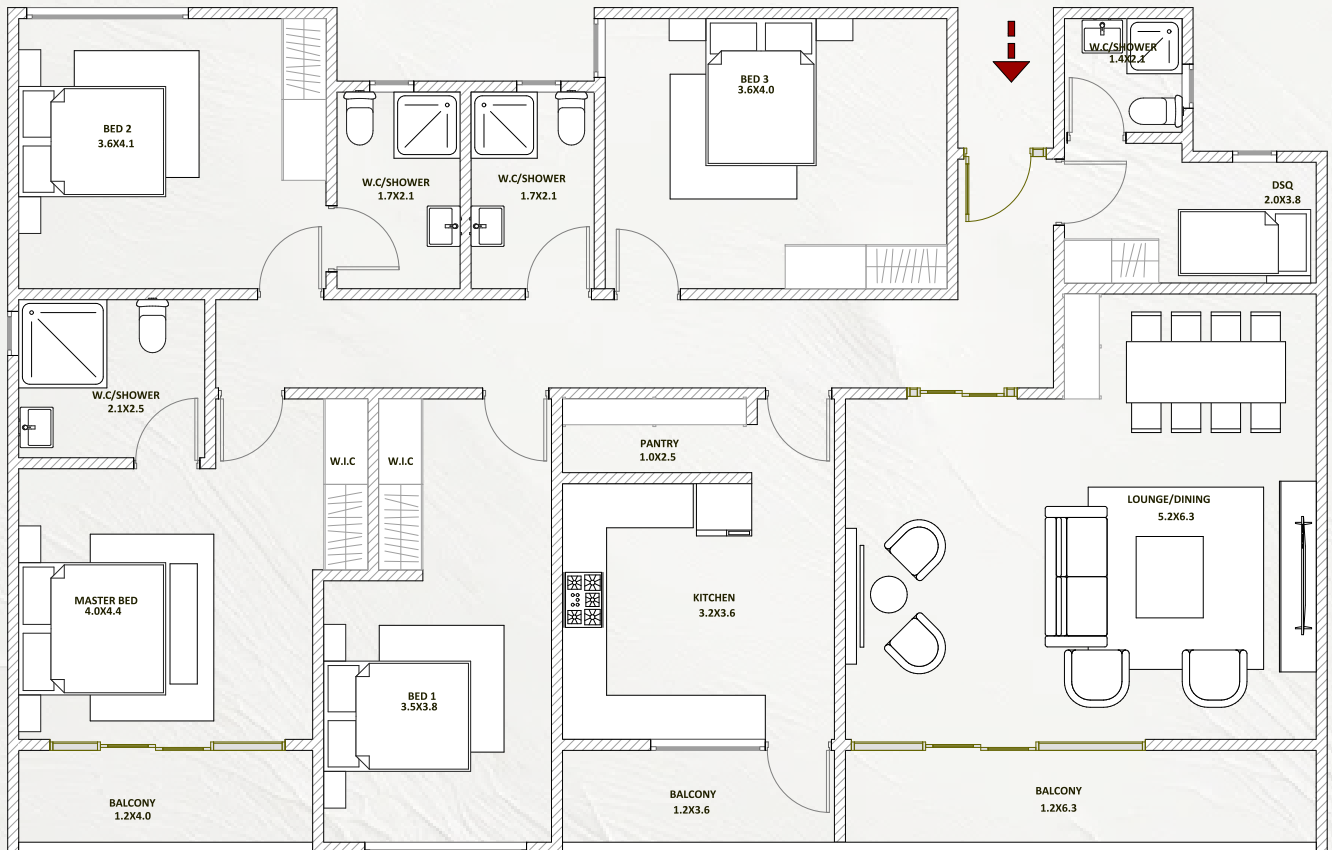
Typical Layout



The Epicenter of Luxury and Convenience!



Typical Layout



Bedroom + DSQ

Unit 1E

Area = 200sqm

The Epicenter of Luxury and Convenience!



3D Cut-out



Bedroom + DSQ

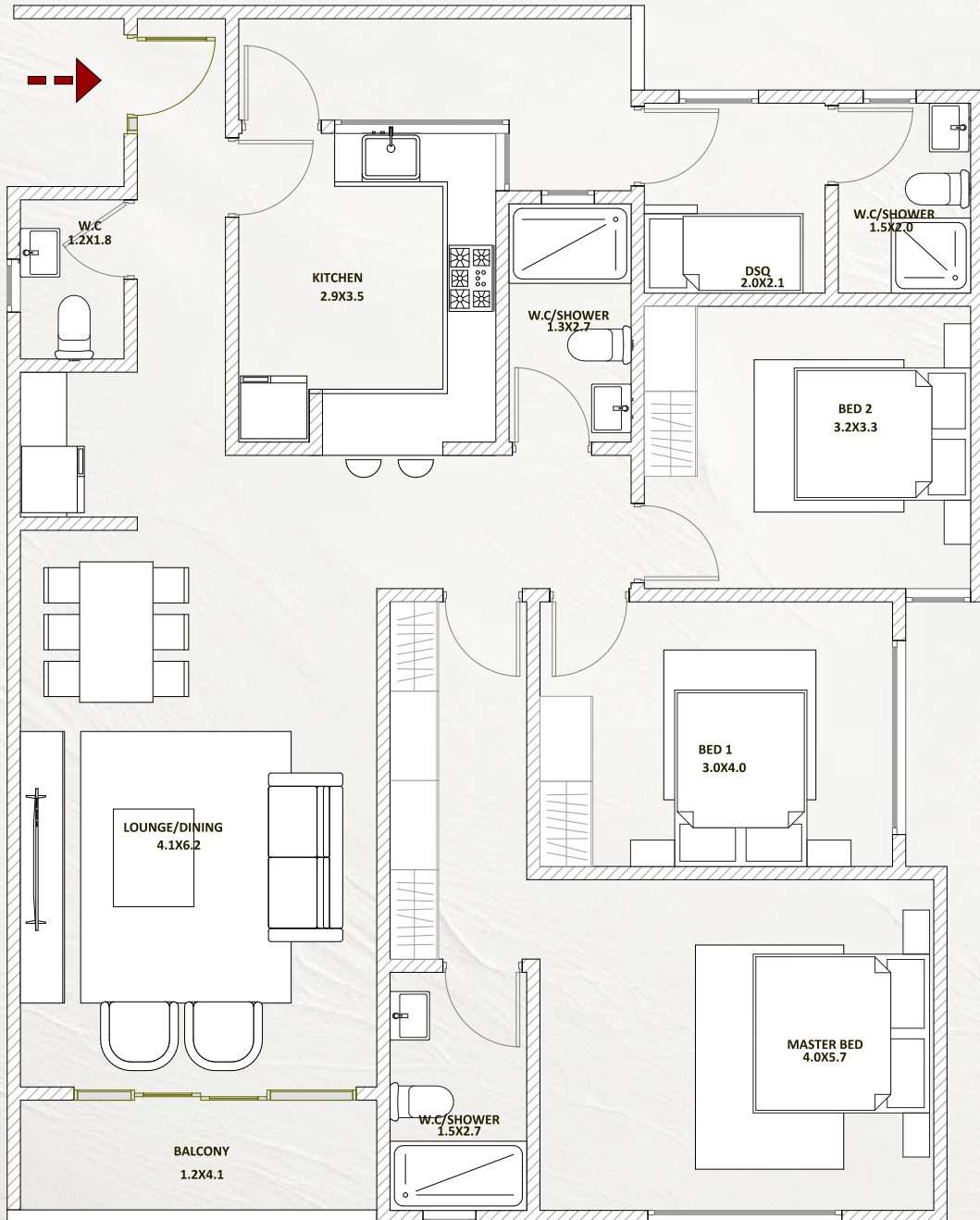
Unit 1E

Area = 200sqm

The Epicenter of Luxury and Convenience!



Typical Layout



Bedroom + DSQ

Unit 1D

Area = 150sqm

The Epicenter of Luxury and Convenience!



3D Cut-out



Bedroom + DSQ

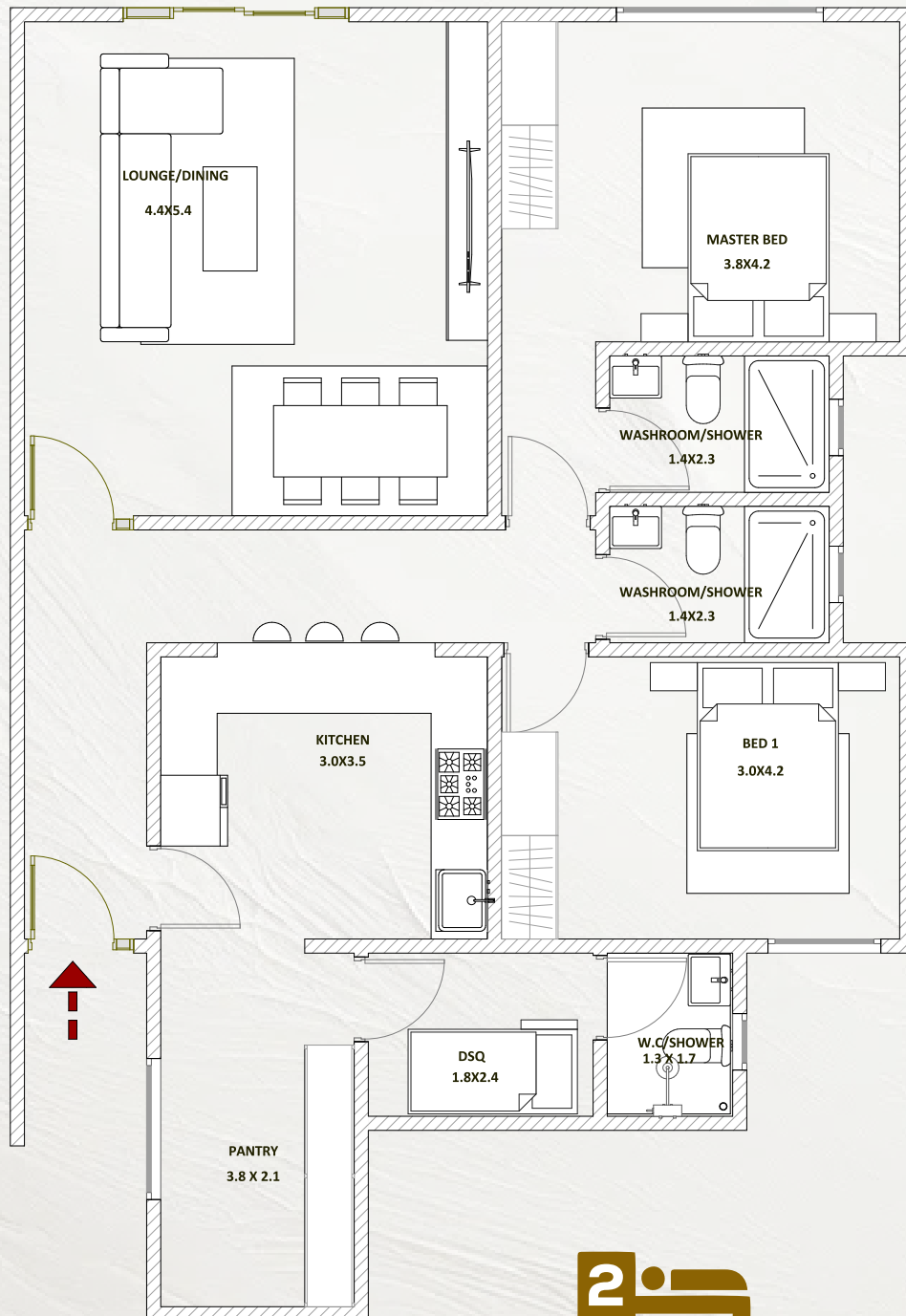
Unit 1D

Area = 150sqm

The Epicenter of Luxury and Convenience!



Typical Layout



Bedroom + DSQ
Unit 1B

Area = 110sqm

The Epicenter of Luxury and Convenience!



3D Cut-out



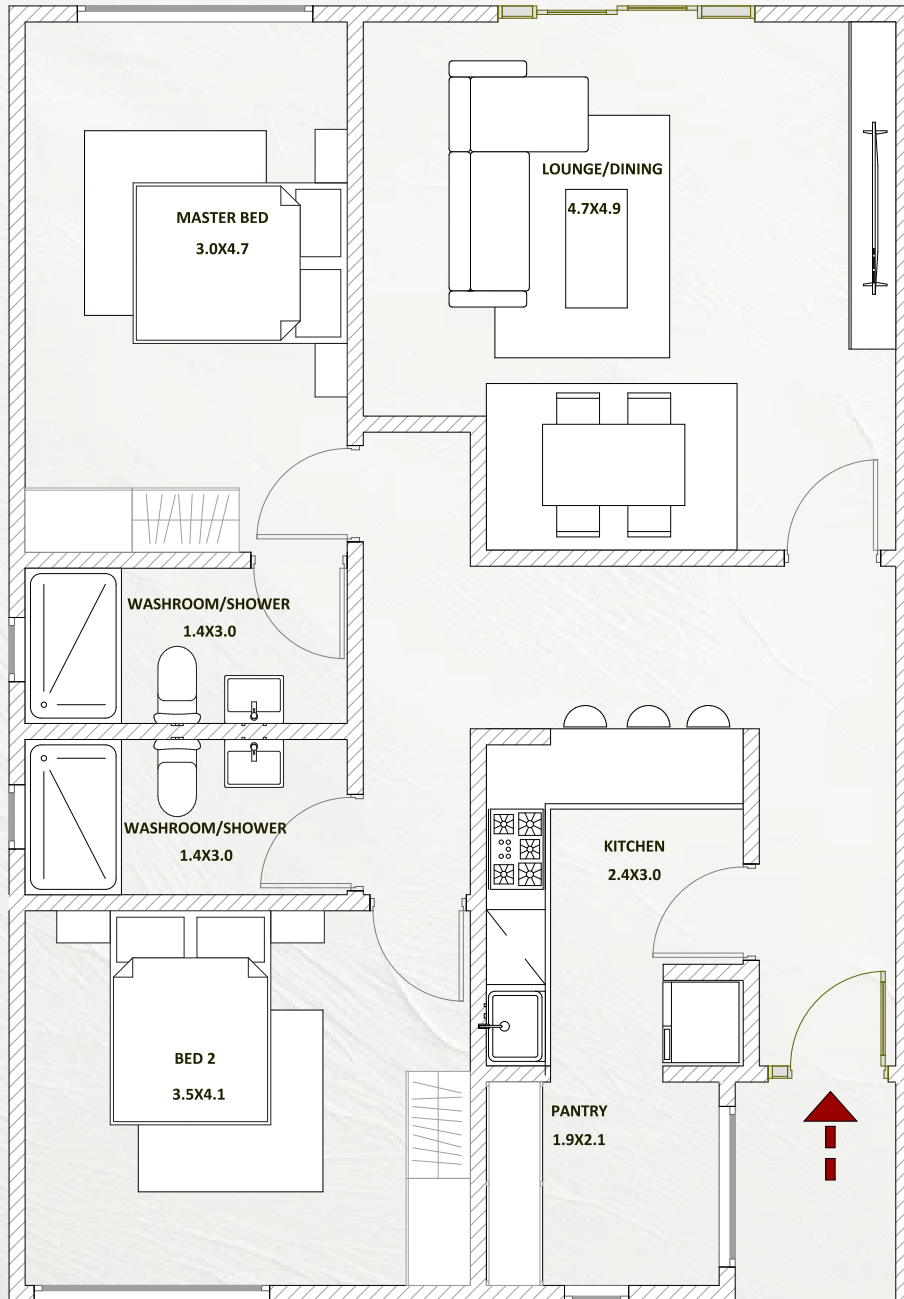
Bedroom + DSQ
Unit 1B

Area = 110sqm

The Epicenter of Luxury and Convenience!



Typical Layout



Bedroom Unit 1A

Area = 100sqm

The Epicenter of Luxury and Convenience!



3D Cut-out



Bedroom Unit 1A

Area = 100sqm

The Epicenter of Luxury and Convenience!



Living Room

Curating your Living Space into a cozy retreat, where comfort, style and personal touches blend harm

The Epicenter of Luxury and Convenience!



Bedrooms

*"The difference between ordinary and extraordinary
is that little extra." – Jimmy Johnson*

The Epicenter of Luxury and Convenience!



Bathrooms

The Epicenter of Luxury and Convenience!



Kitchen Area

*No matter where life takes us, the kitchen is where
we all come back to*

The Epicenter of Luxury and Convenience!



Dining Area

*"Food is our common ground, a universal experience."
- James Beard*

The Epicenter of Luxury and Convenience!



Supermarket

The Epicenter of Luxury and Convenience!



Madrasa

The Epicenter of Luxury and Convenience!

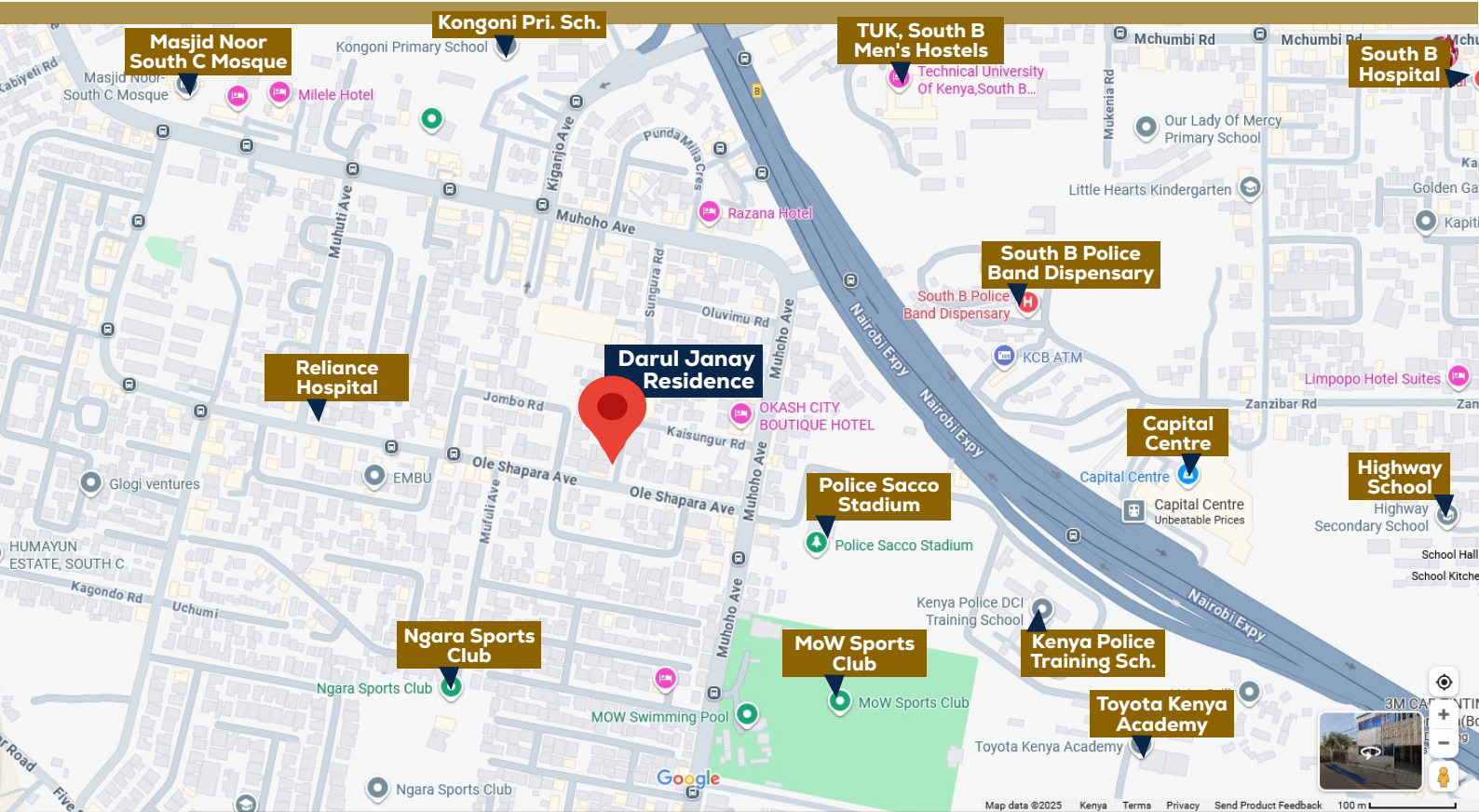


Ample Parking

The Epicenter of Luxury and Convenience!



Property Location



Google Location Pin:

https://maps.app.goo.gl/pPj2pjHfPNMQVcro9?g_st=ipc

The Epicenter of Luxury and Convenience!



DARUL

JANAY RESIDENCE



+254 795 013 993
+254 722 349 797

The Epicenter of Luxury and Convenience!



GREATGRAND
ARCHITECTS