

**SALE**  
NOW ON



**HUDA**  
**TOWER**

*Prime Urban Living*

**4,3&2**  
**Bedrooms**  
*Apartment*





## *Features*

### **2 Bedrooms**

Units

Area = 90 sqm

### **3 Bedrooms**

Units

Area = 130 sqm

### **4 Bedrooms**

+ DSQ Units

Area = 190 sqm

*Prime Urban Living*

## ***Project Description***

---

### **HUDA TOWER Luxury Apartment on Iregi Road, Parklands – Prime Urban Living**

Nestled in the heart of Parklands along the serene and well-connected Iregi Road, this luxury apartment offers a perfect blend of upscale living and unmatched convenience. Located just 5 minutes from Nairobi's Central Business District, the residence provides seamless access to both the city's economic hub and the vibrant Westlands commercial area. This modern apartment boasts spacious interiors with high-end finishes, including imported ceramic tiles, granite countertops, and floor-to-ceiling windows that bathe the rooms in natural light while offering stunning views of the city skyline. The layout is thoughtfully designed, featuring en-suite bedrooms, a contemporary closed/open-plan kitchen, and private balconies.

#### **Residents enjoy proximity to key urban amenities:**

Aga Khan University Hospital, a leading medical facility, is just minutes away. Westlands Shopping Center, known for its upscale retail outlets, dining options, and nightlife, is within easy reach. Top-rated international and private schools, ideal for families. Numerous mosques and places of worship, serving the diverse community in Parklands.

## *Amenities*

---



High Speed Lifts



Borehole & NCC Water



Back-up Generator



Smart CCTV & Manned Security at the Entrance



Ample Parking



Convenient Stores/Shops



Kids Play Area & Gaming Zone



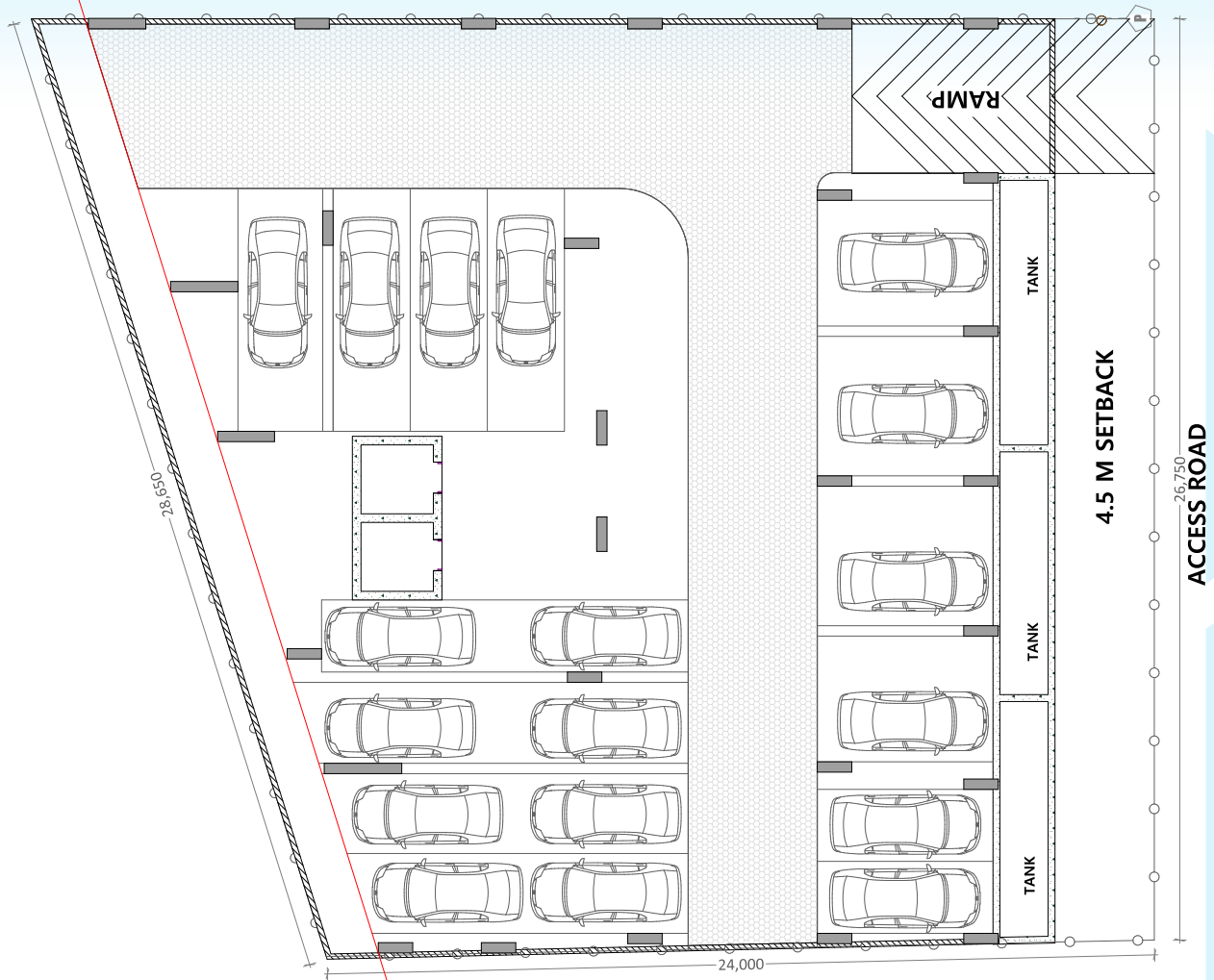


*Prime Urban Living*



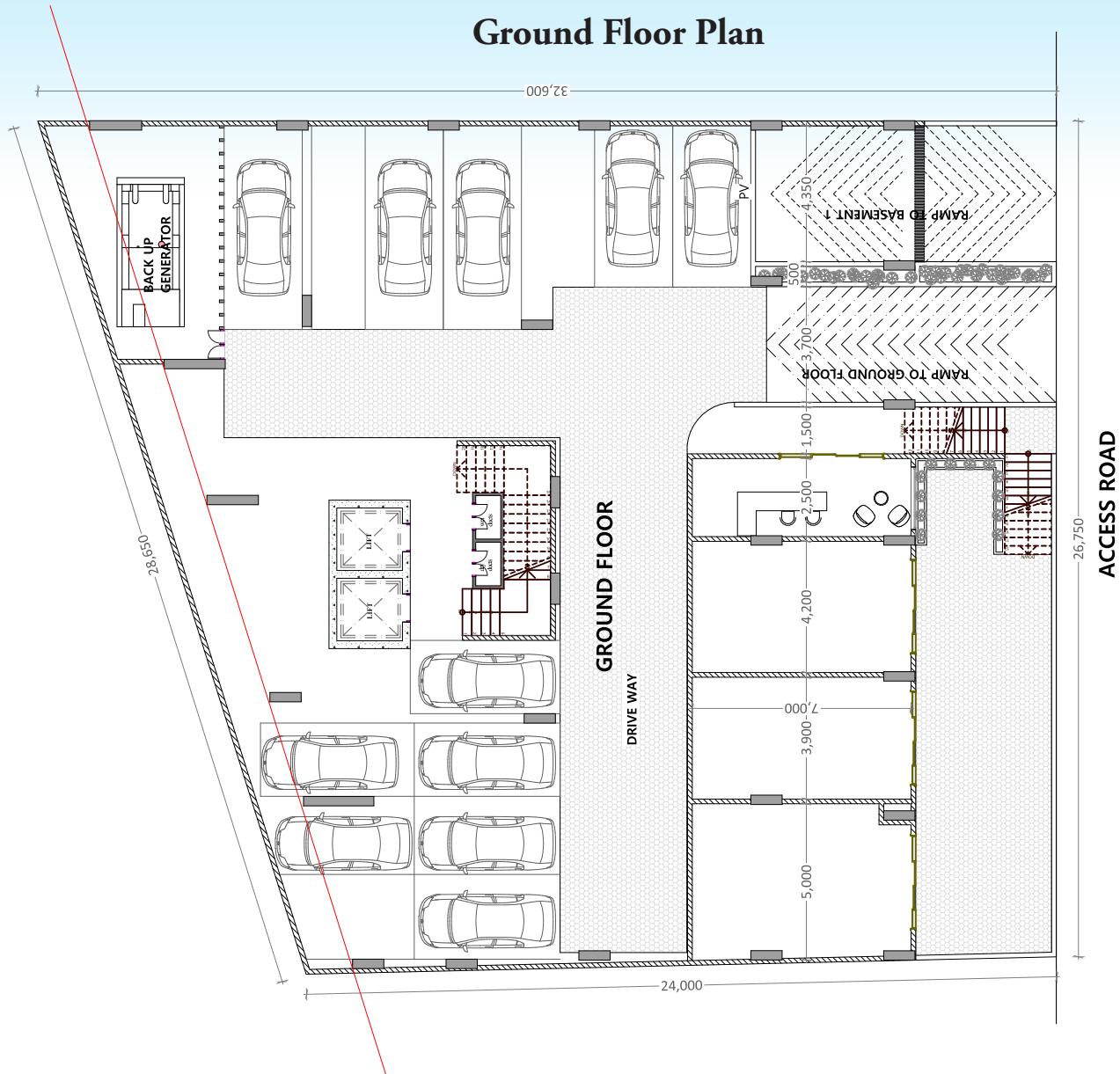
# Typical Plan

## Basement Floor Plan



# Typical Plan

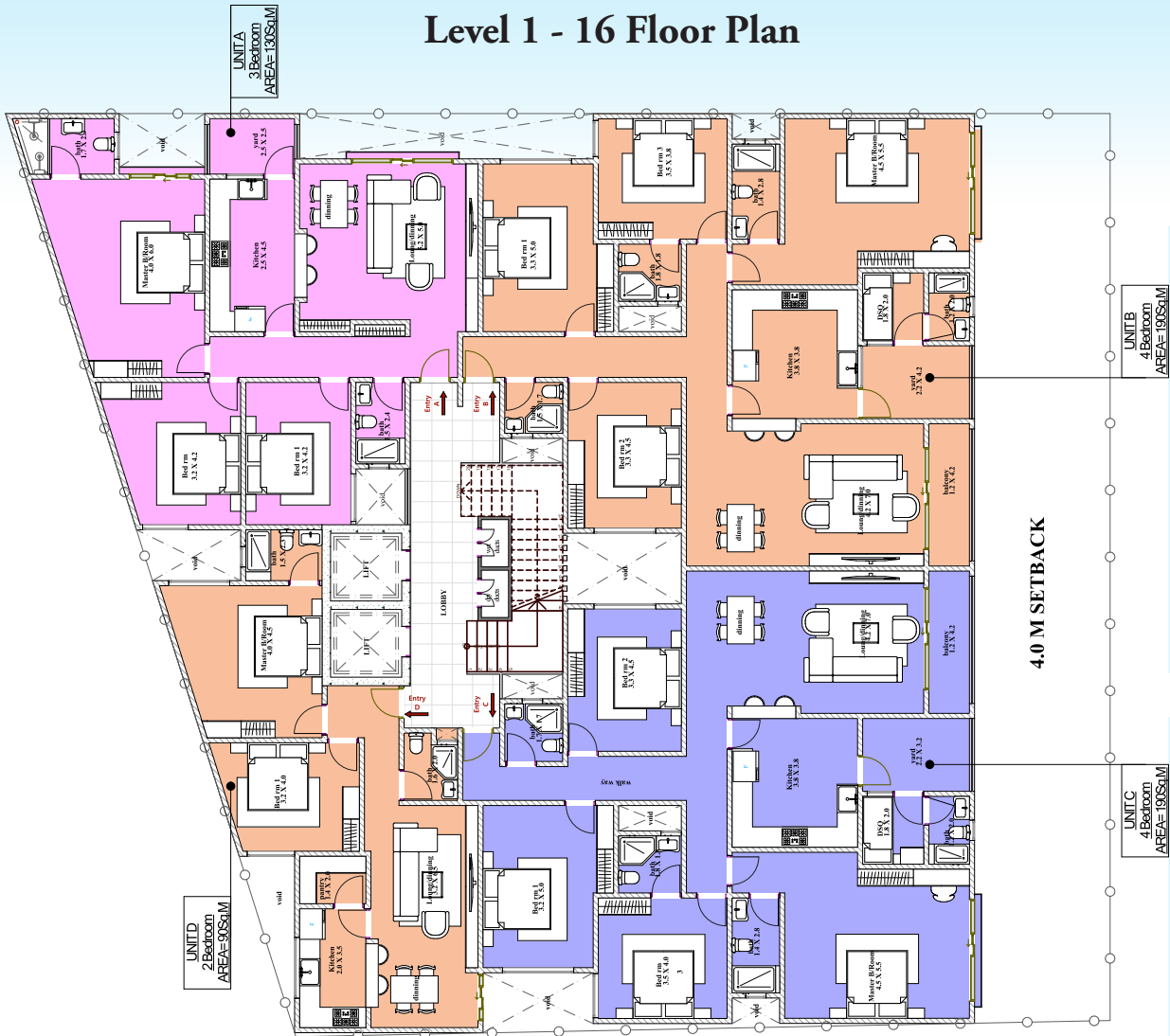
## Ground Floor Plan



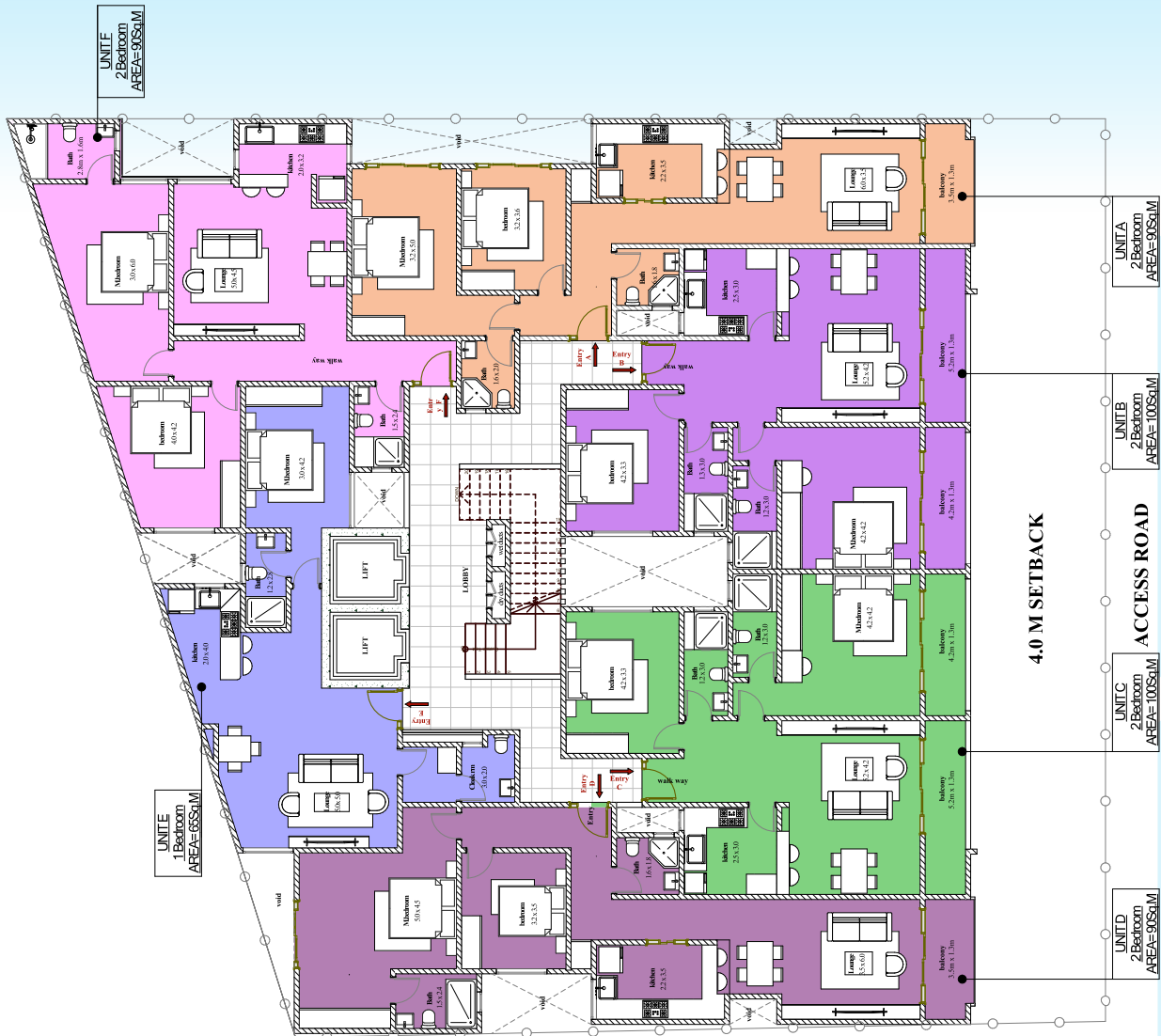


# Typical Plan

## Level 1 - 16 Floor Plan

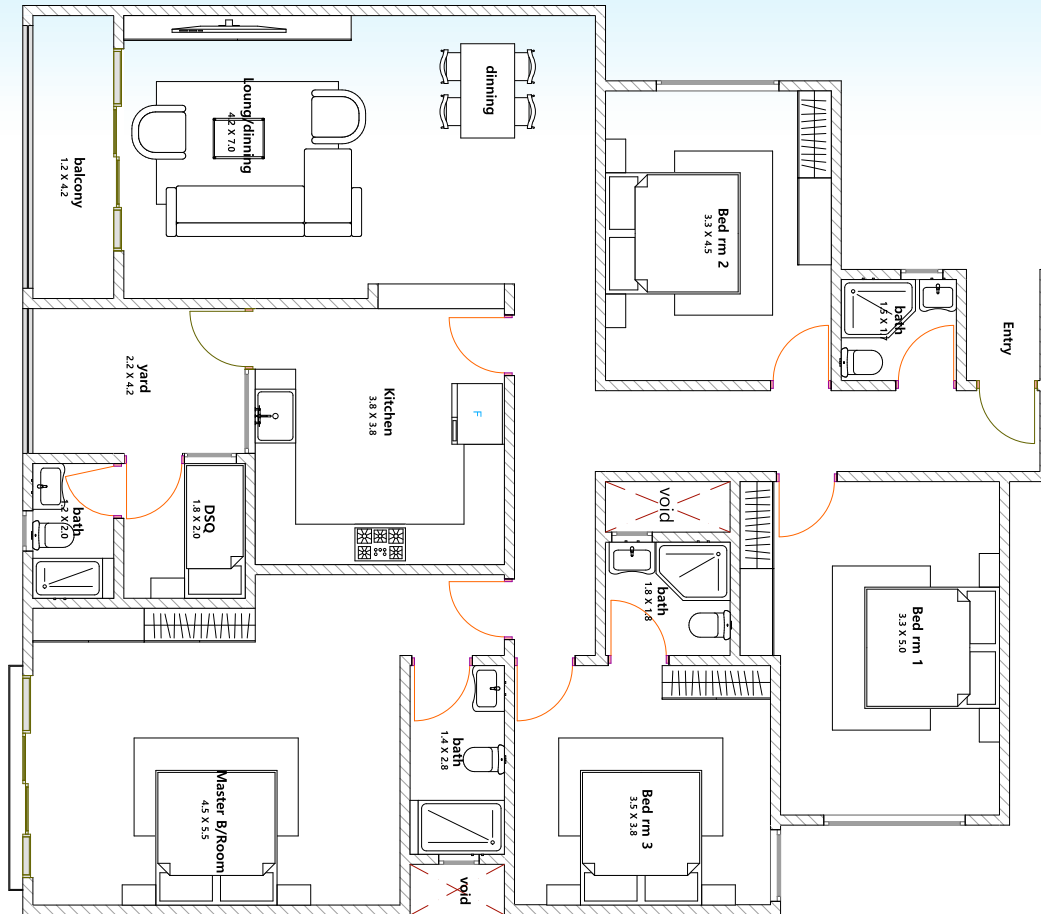


# Typical Plan



# Floor Plan

## 4 Bedroom Floor Plan



### FEATURES



4 Bedrooms  
Master Ensuite



1 Ensuite  
2 Sharing



190  
SQM



1  
Balcony

*Prime Urban Living*



# 3D Plan

## 4 Bedroom 3D Plan

### FEATURES



4 Bedrooms  
Master Ensuite



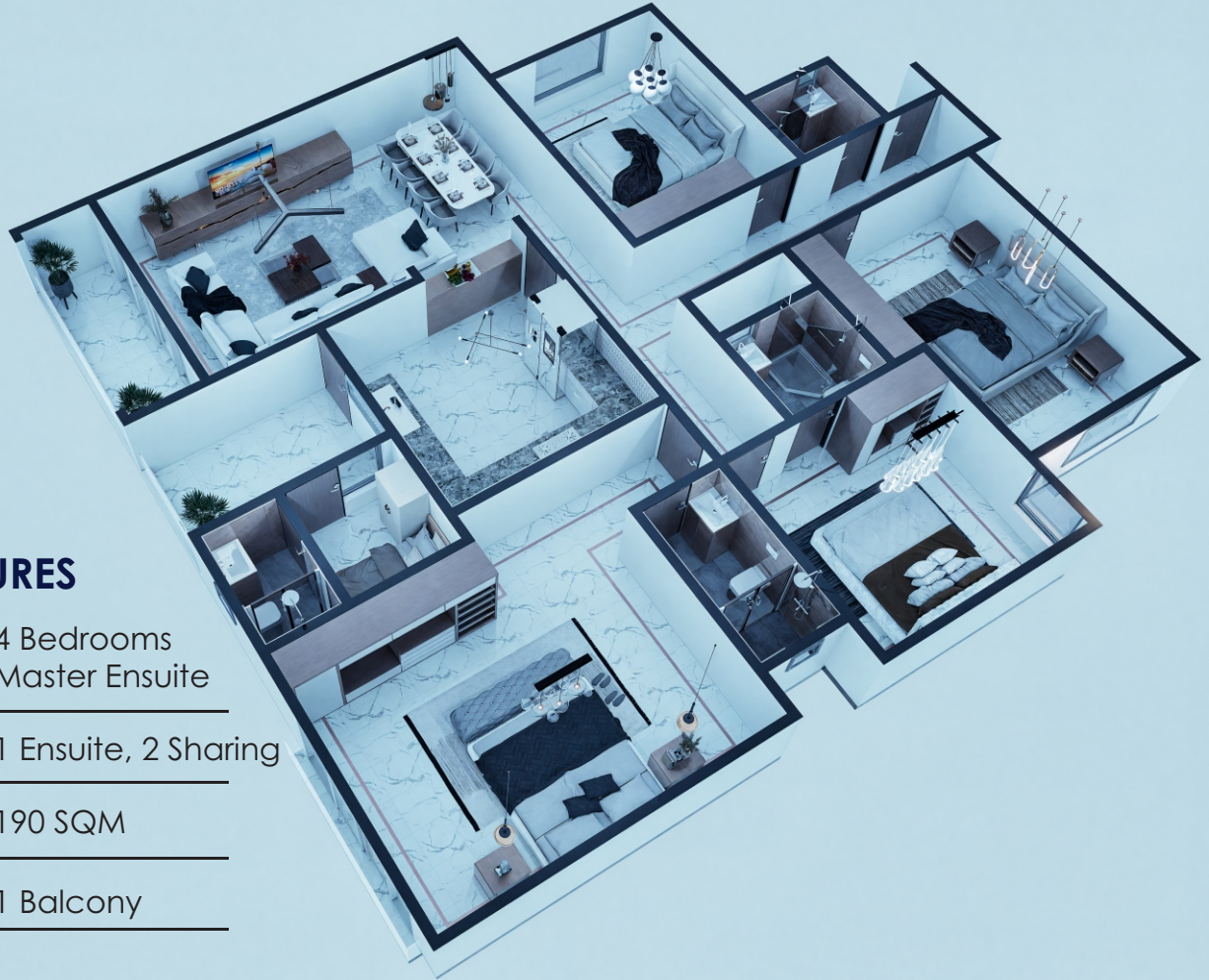
1 Ensuite, 2 Sharing



190 SQM



1 Balcony



*Prime Urban Living*

# Floor Plan

## 3 Bedroom Floor Plan

### FEATURES



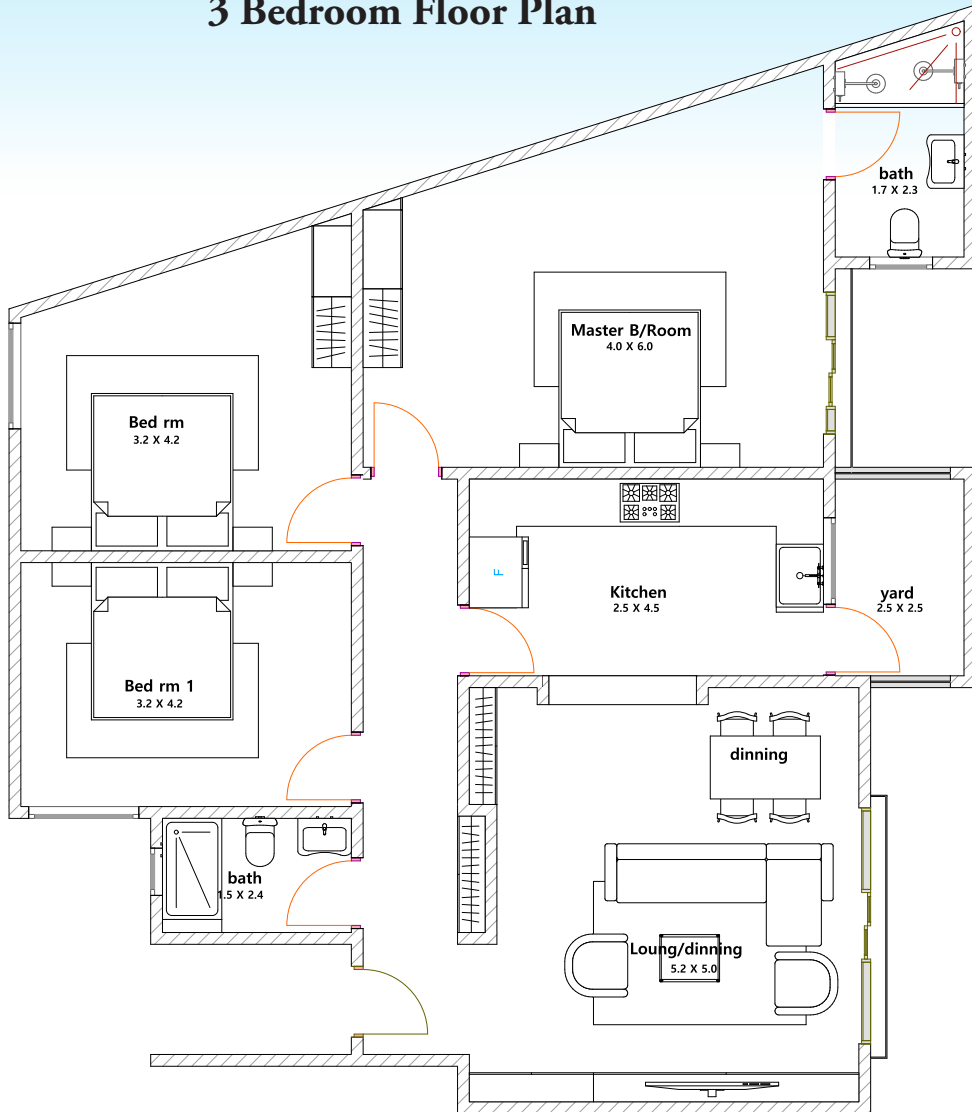
3 Bedrooms  
Master Ensuite



2 Sharing



130 SQM



*Prime Urban Living*

# 3D Plan

## 3 Bedroom 3D Plan

### FEATURES



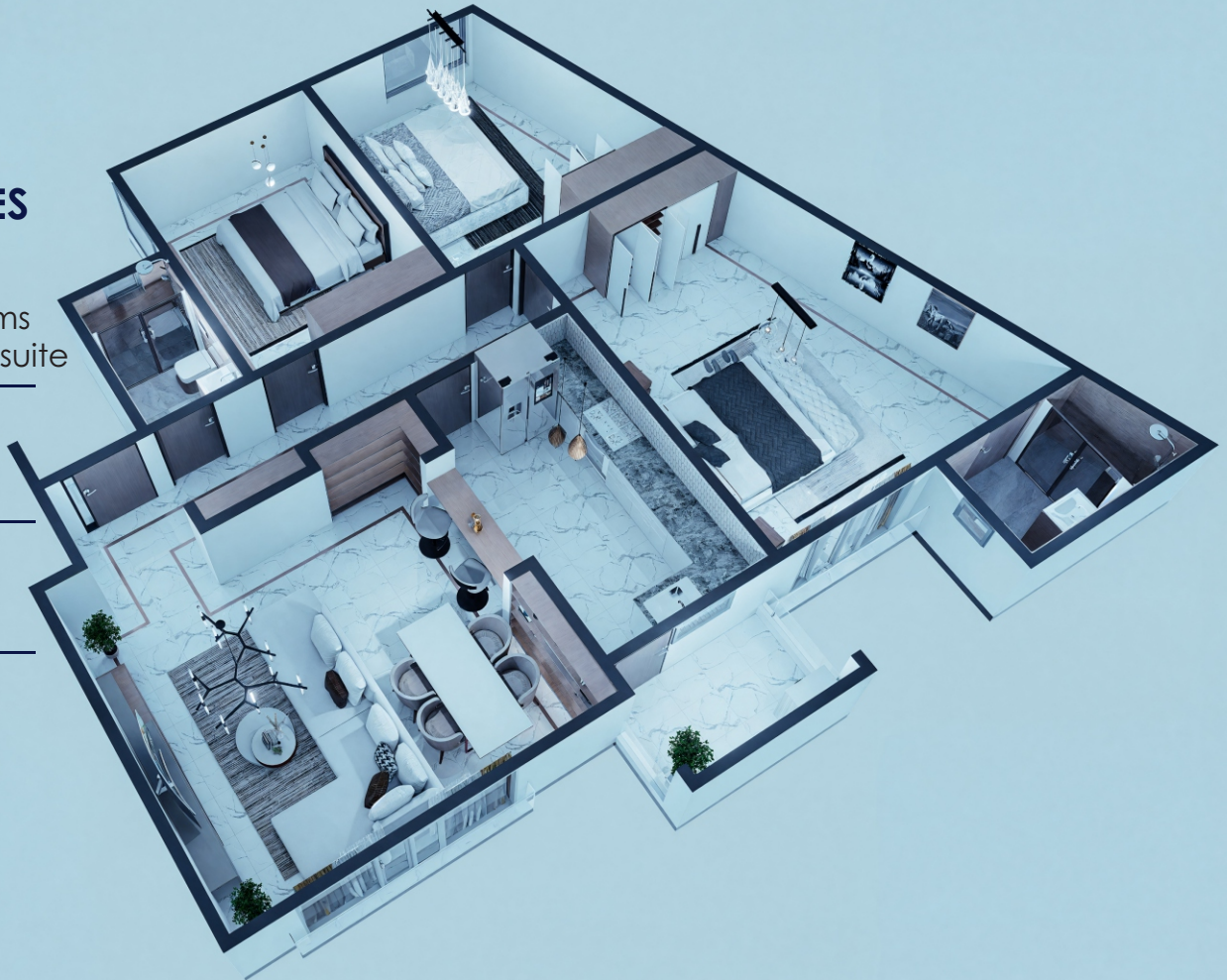
3 Bedrooms  
Master Ensuite



2 Sharing



130 SQM

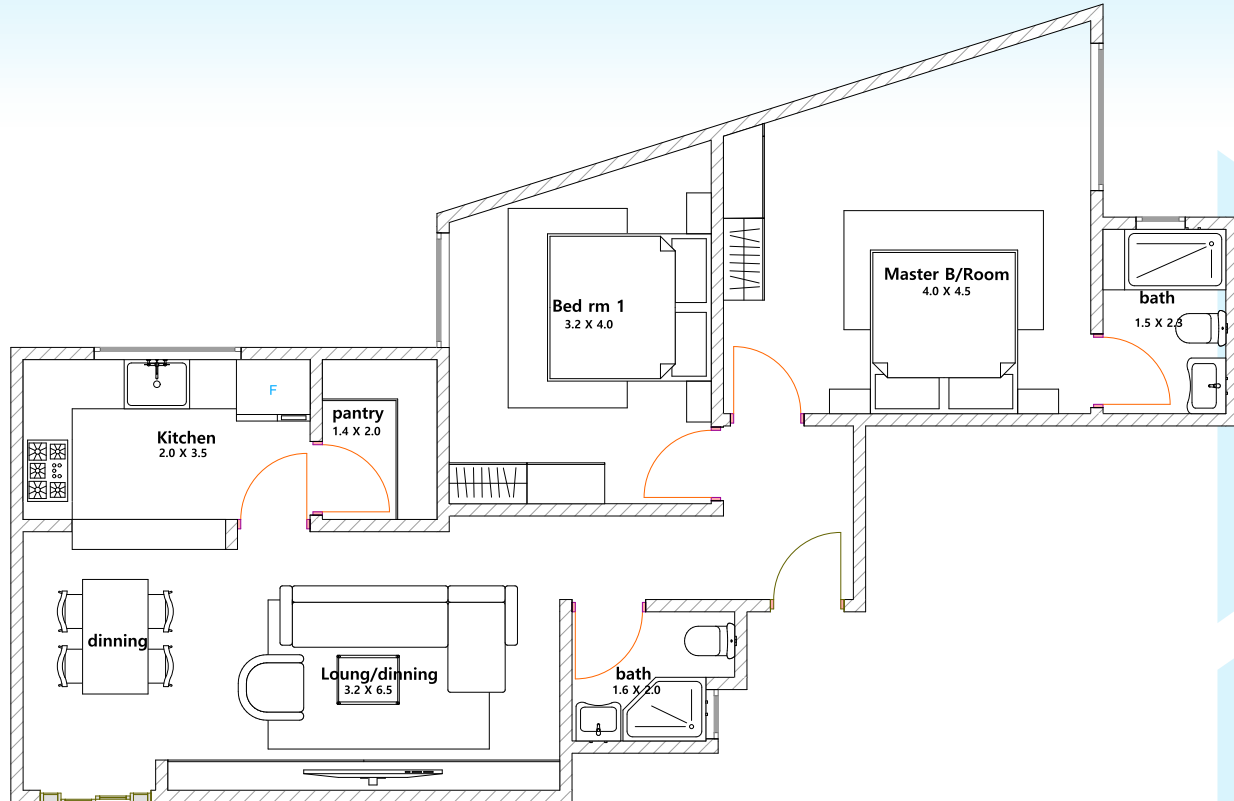


*Prime Urban Living*



# Floor Plan

## 2 Bedroom Floor Plan



### FEATURES



2 Bedrooms  
Master Ensuite



1 Sharing



90 SQM

*Prime Urban Living*

# 3D Plan

## 2 Bedroom 3D Plan

### FEATURES



2 Bedrooms  
Master Ensuite



1 Sharing



90 SQM







*Prime Urban Living*





## Living ROOM

*Prime Urban Living*



*Kitchen*  
**Area**

---

*Prime Urban Living*



## Dining Area

---

*Prime Urban Living*





## Bed Rooms

---

*Prime Urban Living*



*KIDS  
PLAY  
AREA*



*Prime Urban Living*

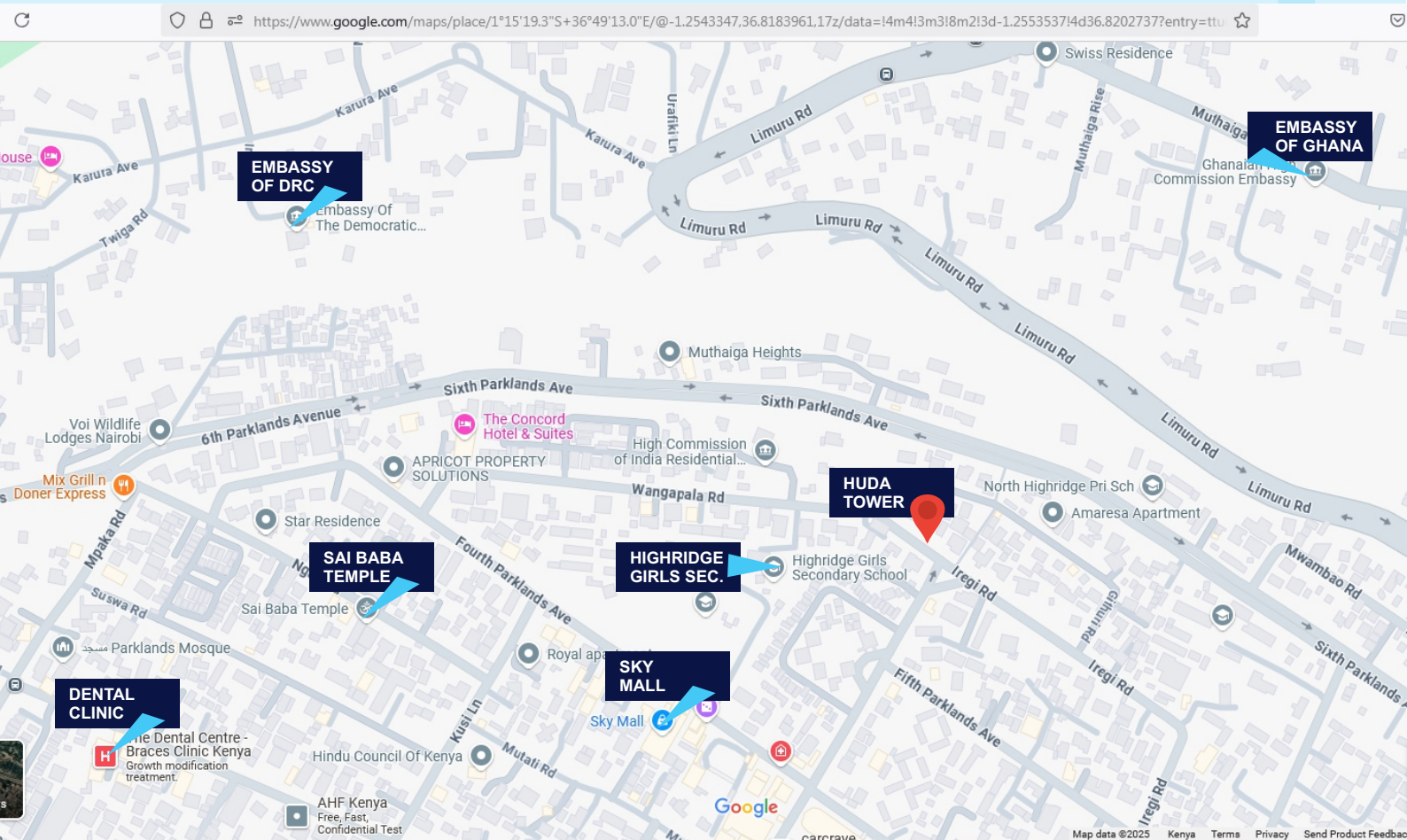
# *SHOPS*



*Prime Urban Living*



# Project Location



<https://maps.app.goo.gl/P5X55jSbZjLWVG3u8>

*Prime Urban Living*



BBS Building, 2nd Floor, Eastleigh  
0721 128 500 / 0706 050 041

*Prime Urban Living*