



1&2
Bedrooms
.....
Kileleshwa



2 Bedroom
Area = 85 SQM

1 Bedroom
Area = 55 SQM

Affordably Classy



About *The Property*

Lexington Loft is a modern 1 & 2 bedrooms apartment with modern state of art finishes with proper orientation for natural day-lighting at the heart of Kileleshwa, Nairobi.

It is strategically located just 5 minutes drive to CBD or Westlands and nearing major infrastructure with quick access to Hospitals, Mosques, Schools, Shopping Malls and other public utilities.

It's fitted with world class security systems and finishes for the welfare of the occupants.



Property *Amenities*



High Speed Lifts



Gym



Restaurant



Sauna



24/7 CCTV Security



Steam



Ample Parking



Mini Supermarket



Laundromat



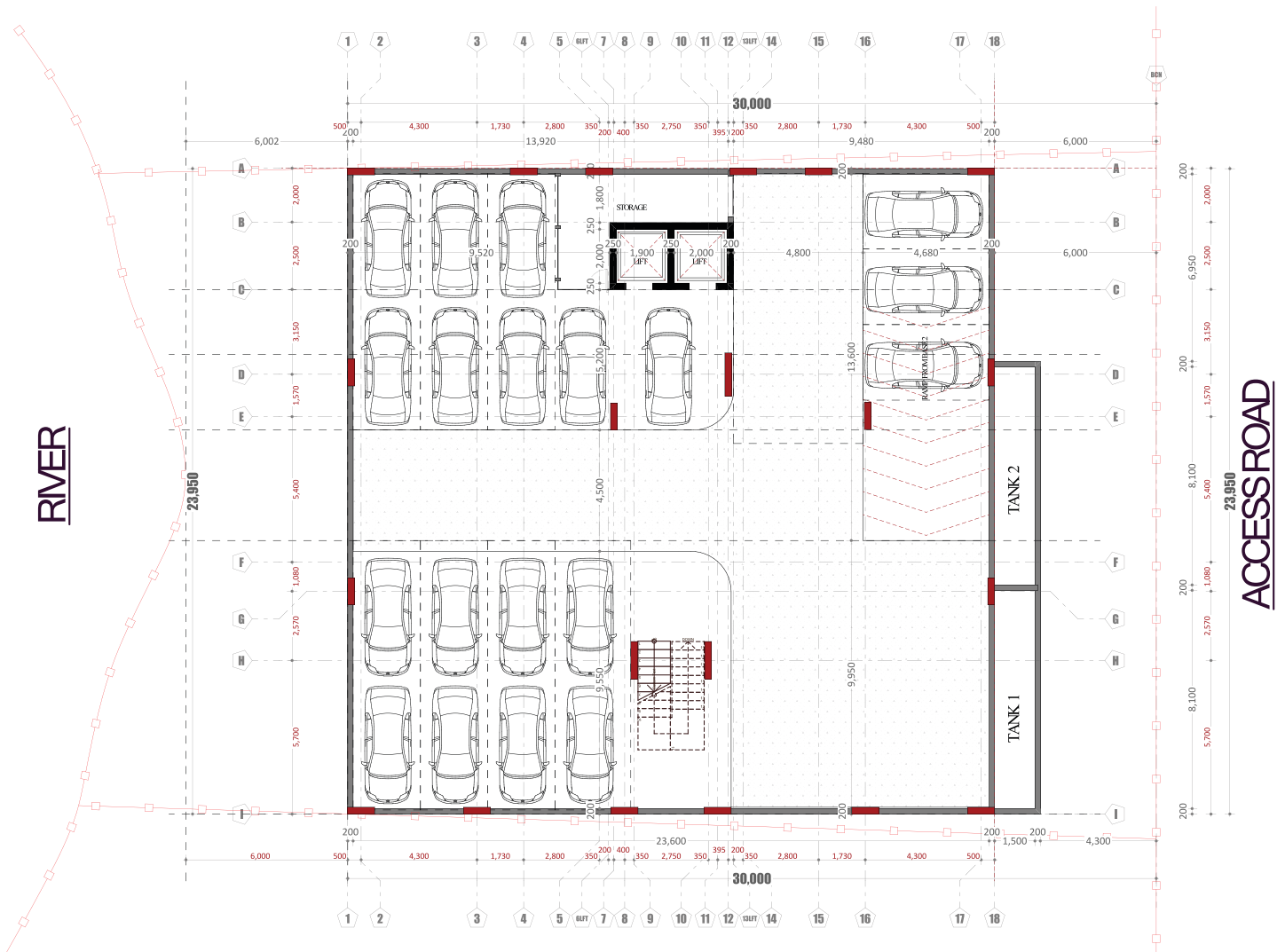
Sky Lounge



Restaurant



Typical Plan



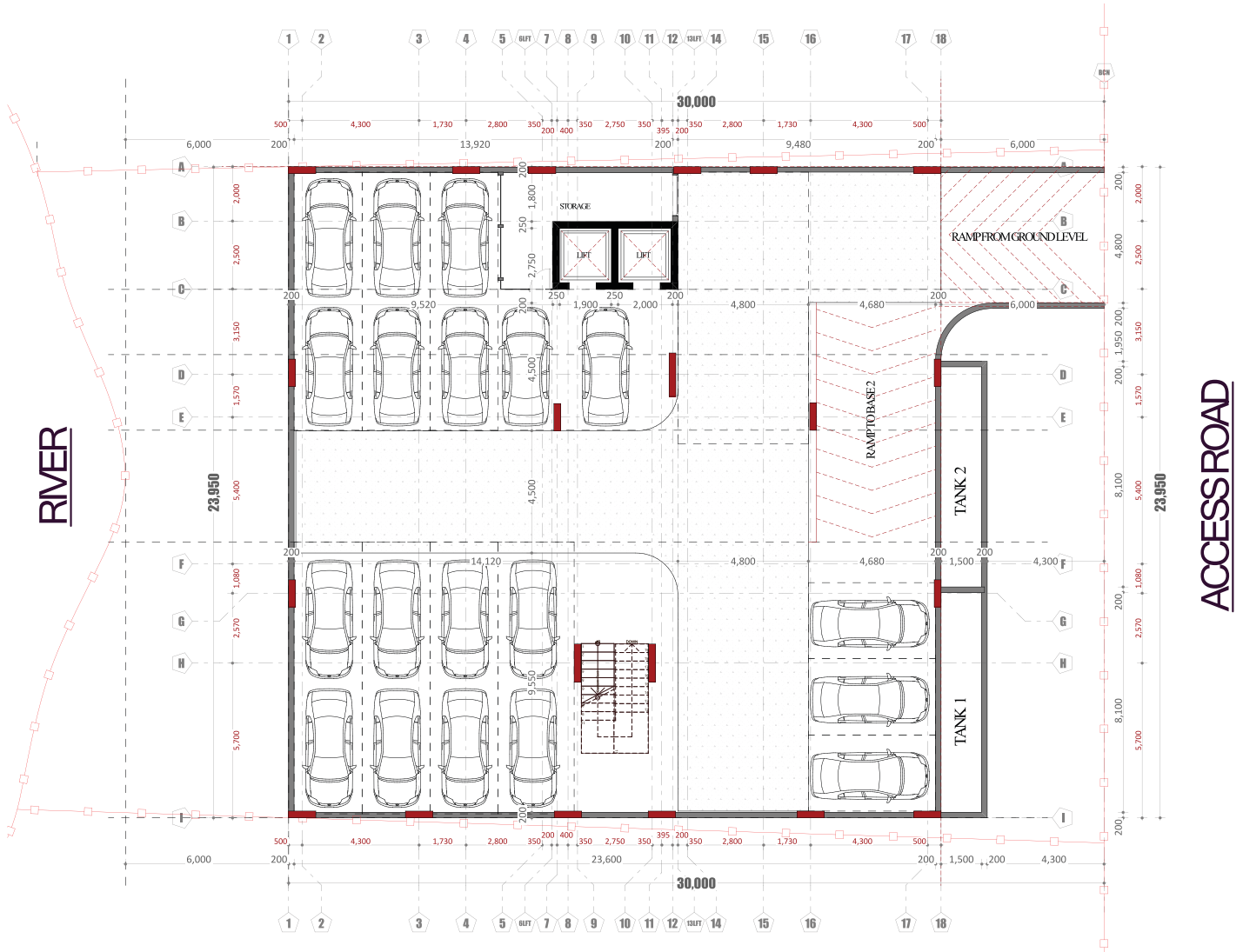
Basement 2 Floor

No. of Parking Space : 19

Affordably Classy



Typical Plan



Basement 1 Floor

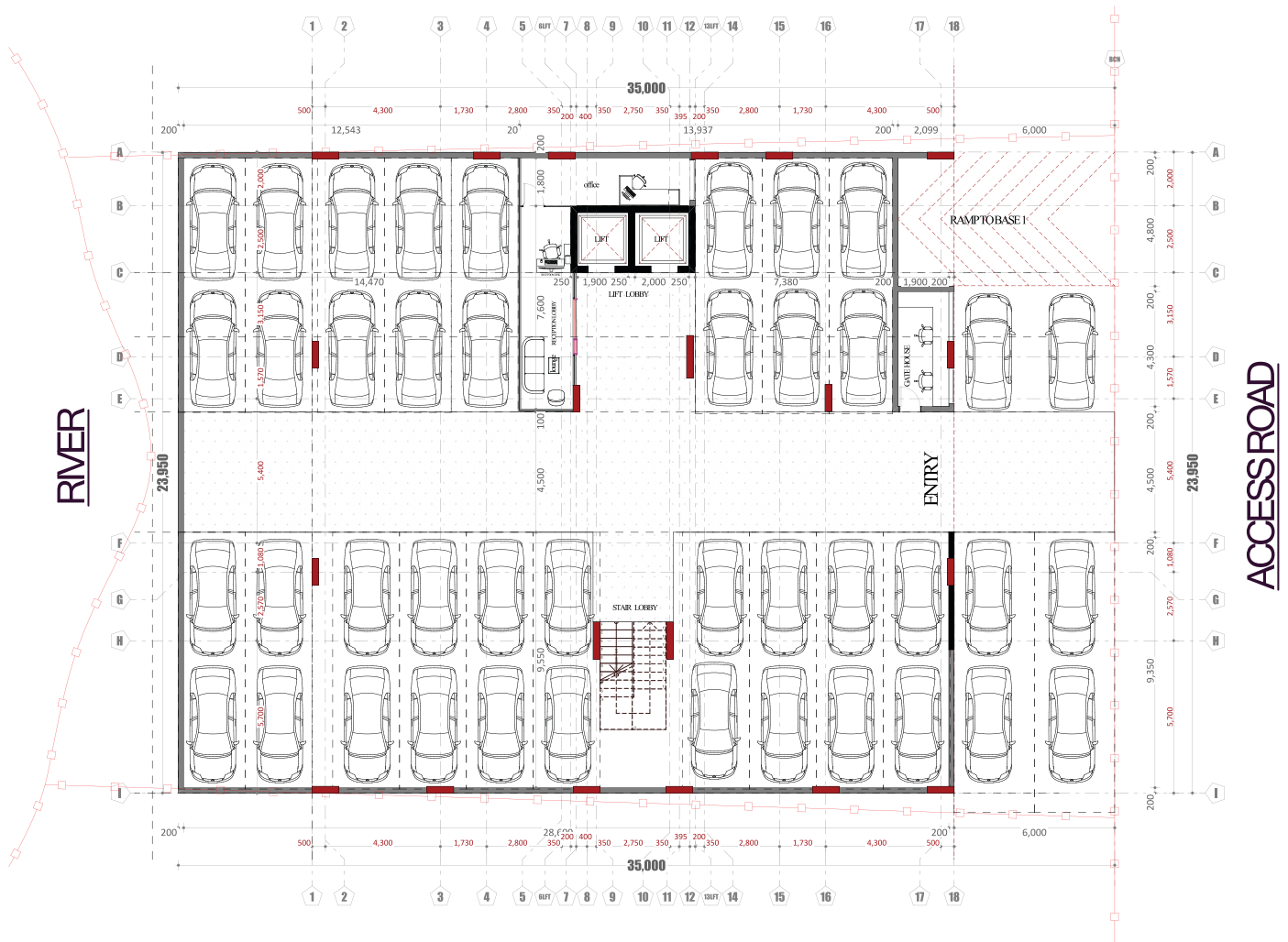
No. of Parking Space : 19

Affordably Classy





Typical Plan



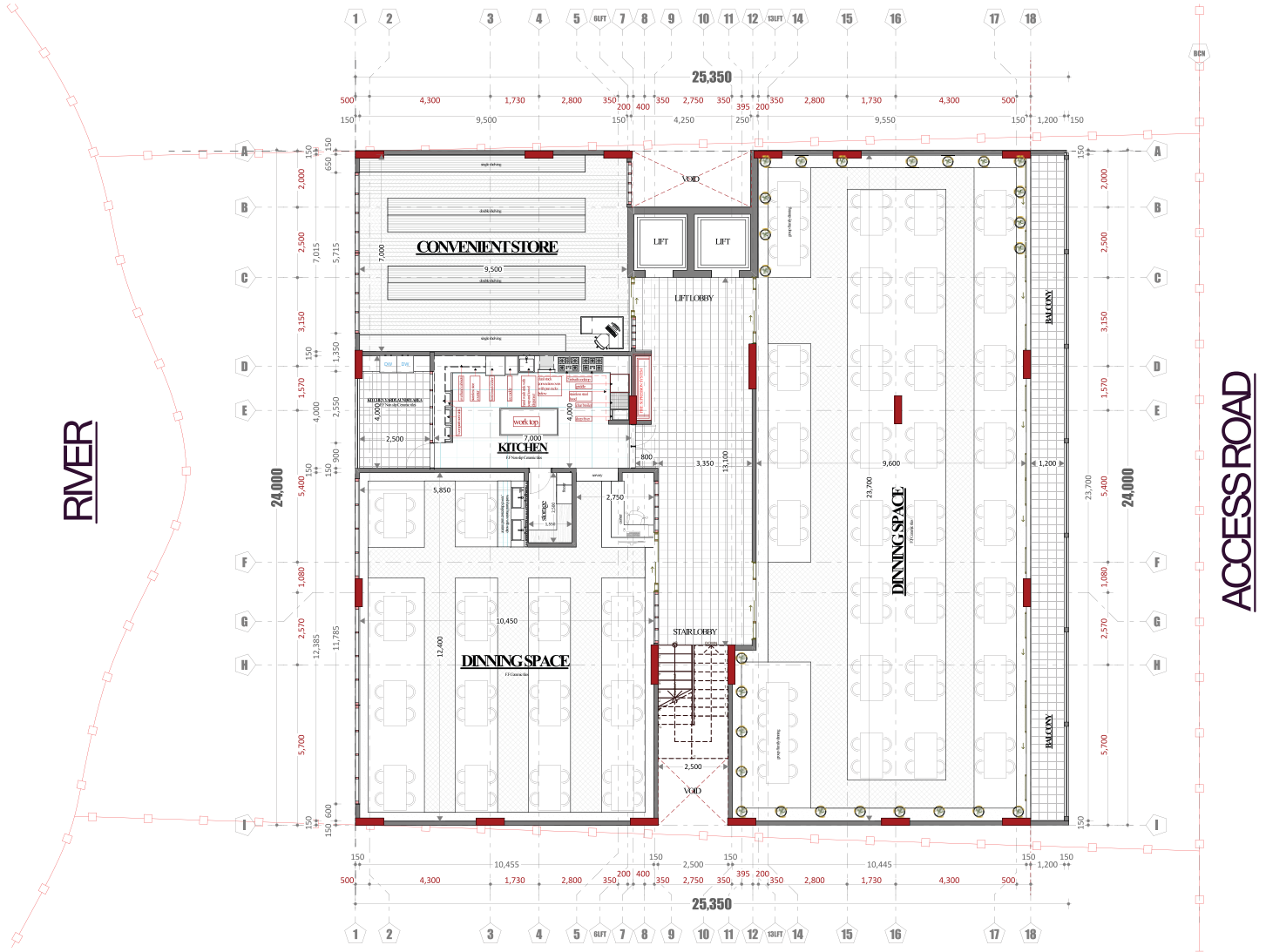
Ground Floor

No. of Parking Space : 42

Affordably Classy



Typical Plan



First Floor

Affordably Classy





Typical Plan

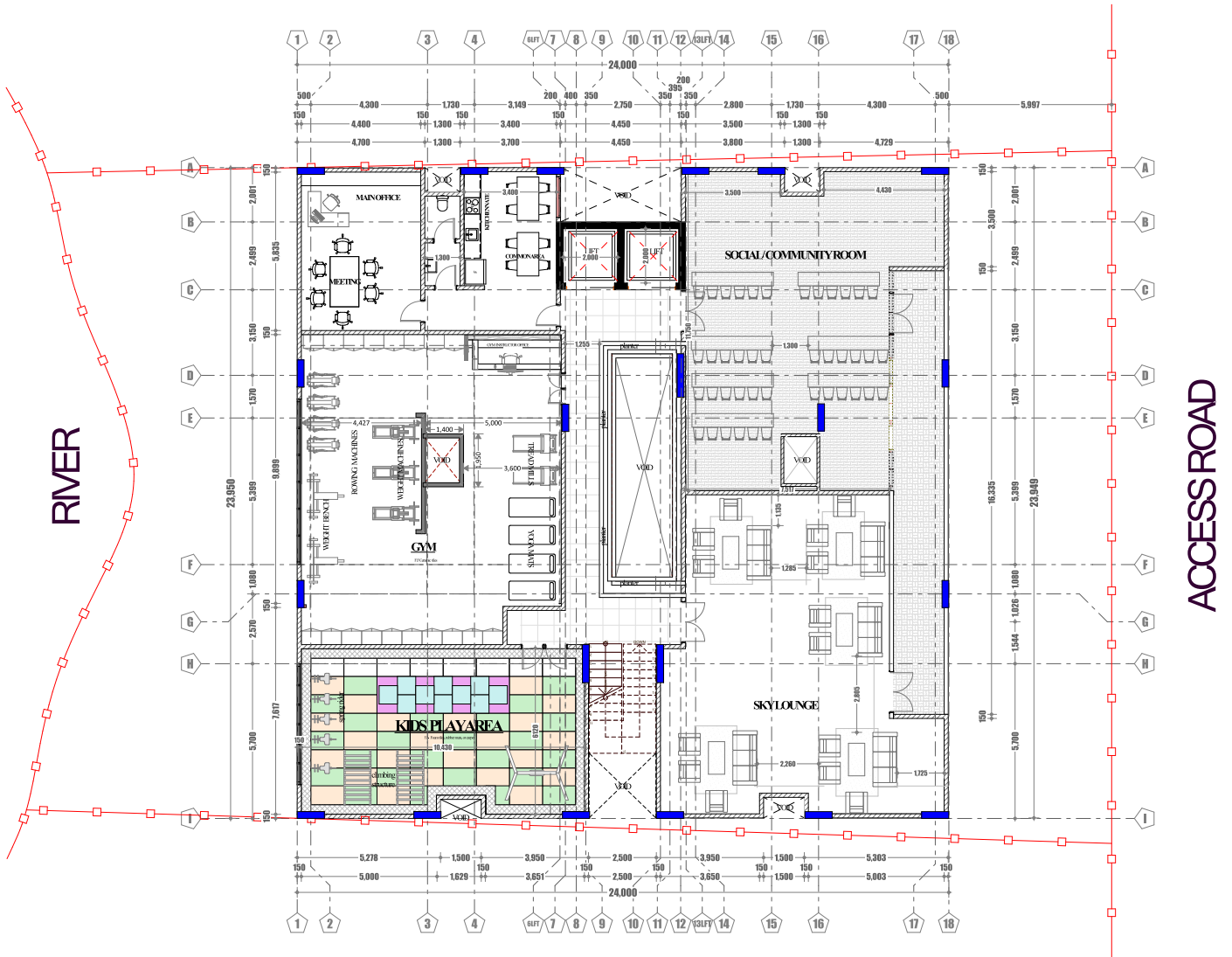


Typical Floor

Affordably Classy



Typical Plan



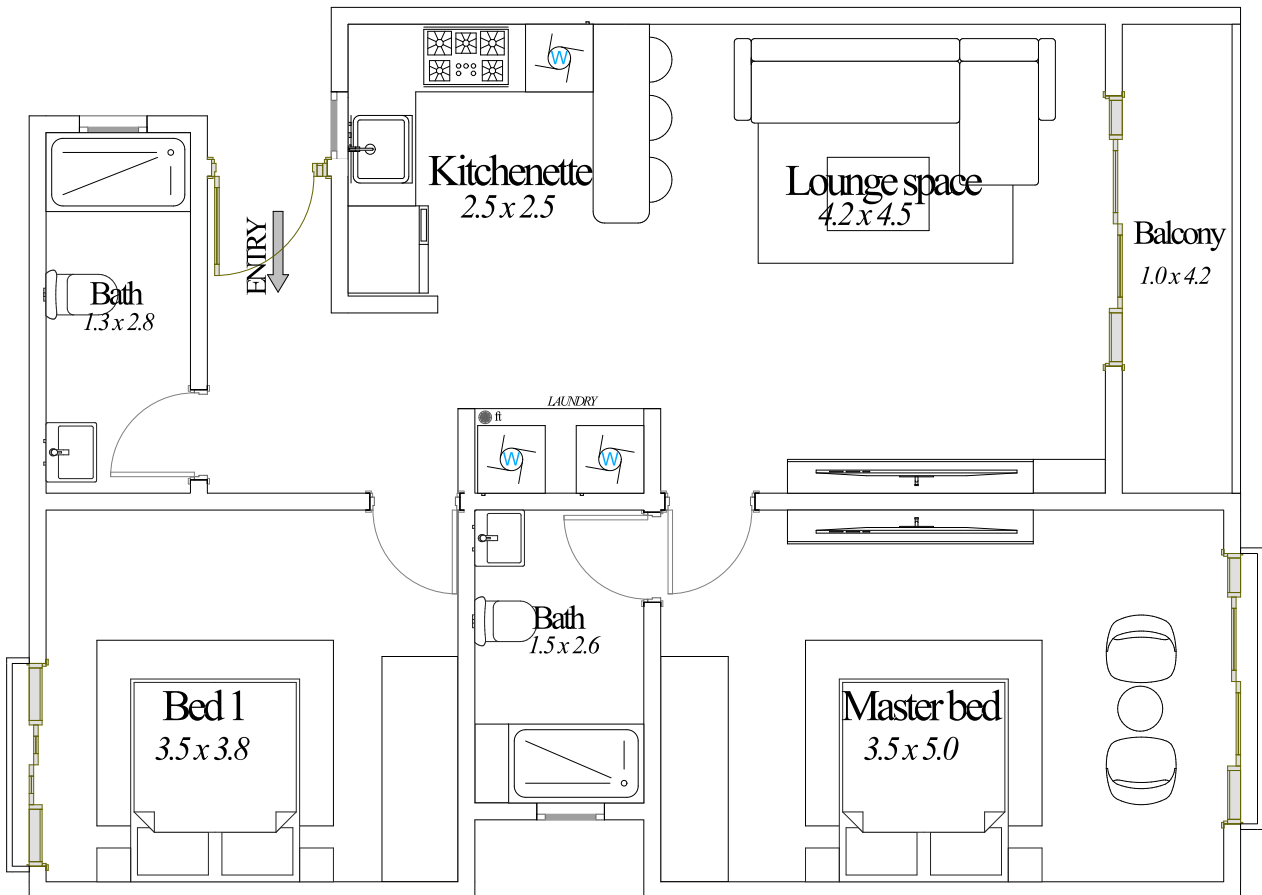
Roof Floor

Affordably Classy





Typical Plan



FEATURES



2 Bedrooms, Master Ensuite



85 SQM



1 Sharing



1 Balcony

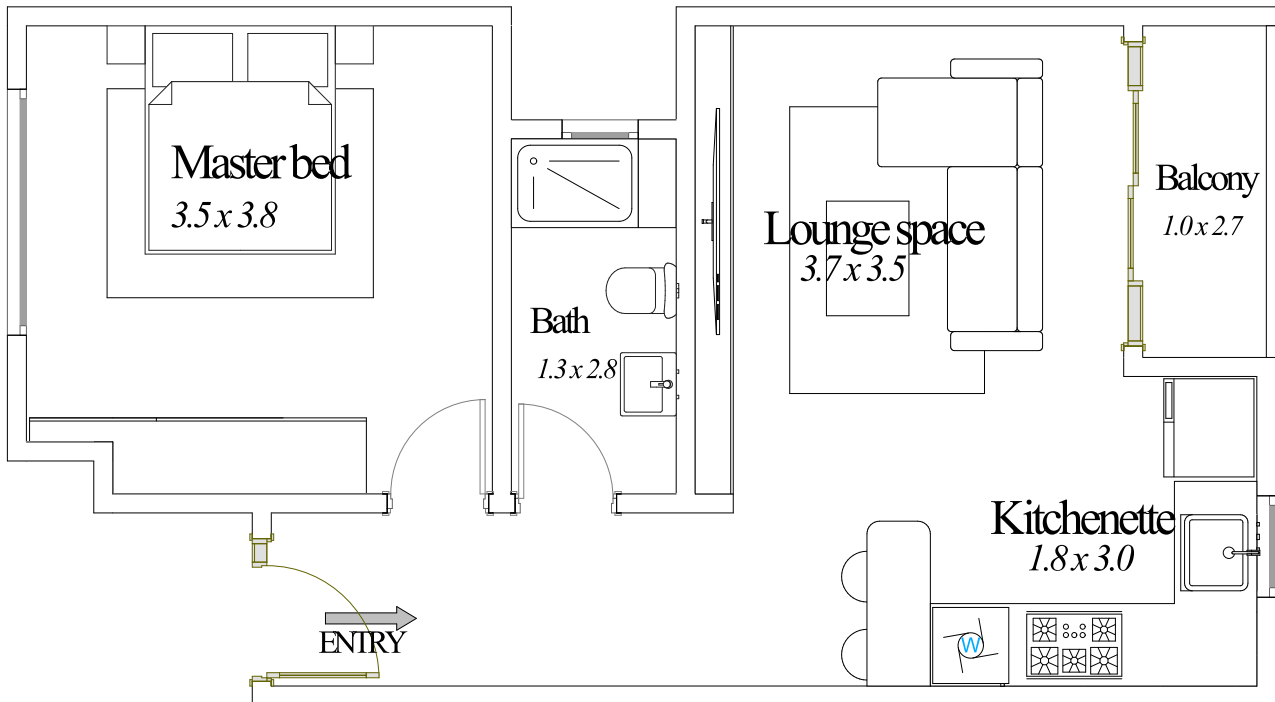
2 Bedroom Plan

Area : 85 SQM

Affordably Classy



Typical Plan



FEATURES



1 Bedrooms



55 SQM



1 Sharing



1 Balcony

1 Bedroom Plan

Area : 55 SQM

Affordably Classy





Sitting
Room

Affordably Classy



Kitchen & Dining Area

Affordably Classy





*Bed
Rooms*

Affordably Classy



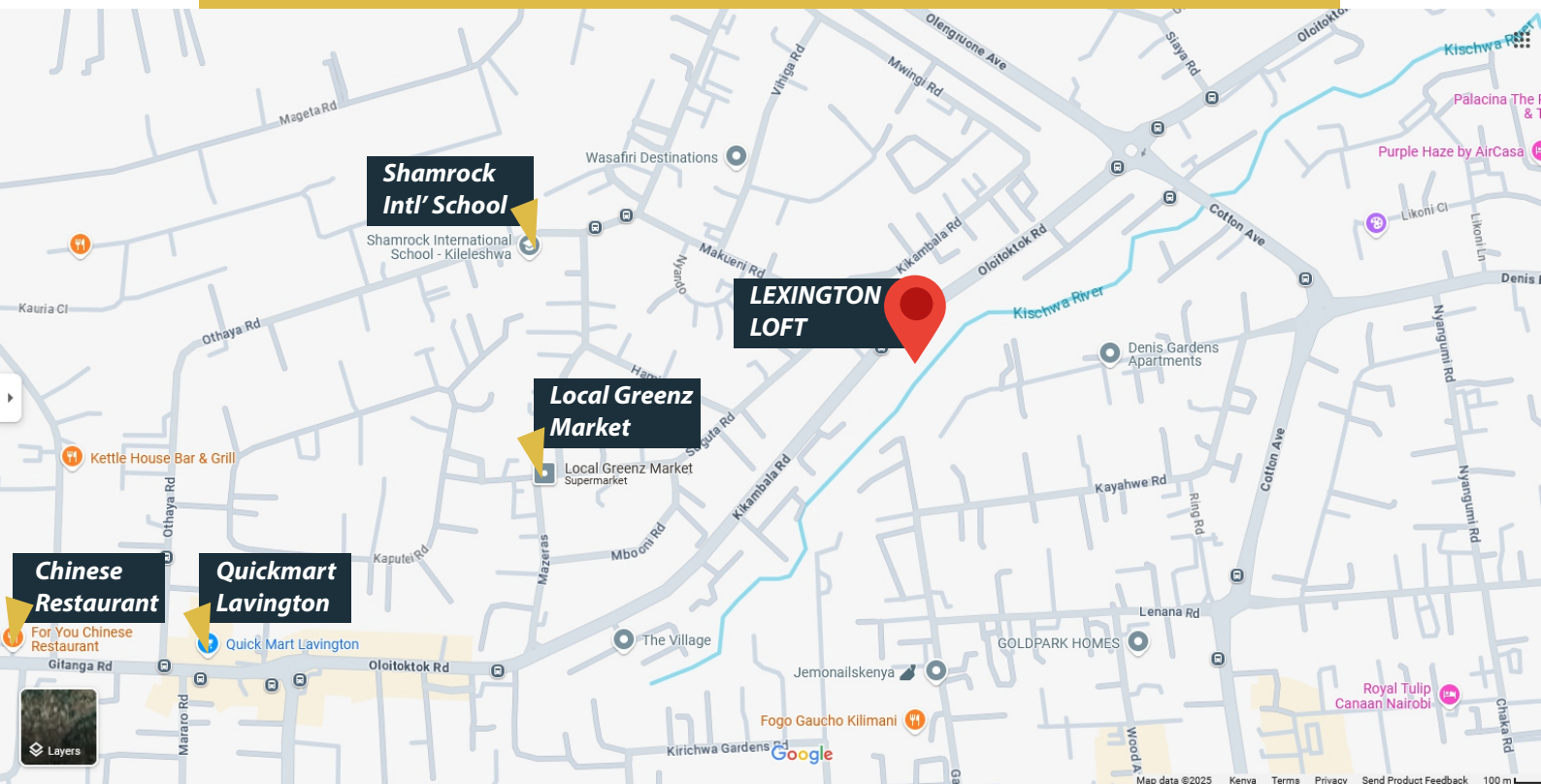
*Bath
Rooms*

Affordably Classy





Property Location



Google Pin Location

<https://maps.app.goo.gl/1KSsz2h6Xspe5obt7>

Affordably Classy





For More Information & Booking

Contact Us



 **+254 722 260 228**

 **P. O. Box 207 - 00628, Nairobi - KE**

 **Diamond Plaza 1, Parklands Main Building
2nd Floor Room 9**

